



ENVIABLY  
AMAZING  
VILLAS



Vengaivasal - Medavakkam Main Road





## ABOUT LANDSTER HOMES

Landster Projects Pvt Ltd was incorporated in the year 2009 with a novel motto. Landster is a pioneer realty firm delivering quality with customer satisfaction in the vertical and horizontal development of NAMMA CHENNAI and its fast-developing suburbs. Landster soars high with a devoted and committed staff bringing in numerous consistent happy customers. Our valuable customers not only spread good word of mouth but also act as Landster's brand ambassadors and thus our customers are our goodwill and asset.

One of the versatile visions of Landster is to continuously strive hard to ensure the outstanding service to the customer right from acquiring the right property to the legal transfer of ownership. We have an acquired and dedicated diligent team of 25 members with an extended skill set and passion to deliver the standard. We believe the employees are inseparable part from each and every project and the management. Our team is always on the heels to attend our valuable customers and work towards common goal of customer satisfaction.

The company's motto is to

- Strive Hard
- Commit and Serve
- Deliver Standards
- Customer Care and Satisfaction
- Reasonable Pricing Landster's long term vision is to create a trusted brand for all the spacing needs and requirements.





### AMAZING LIFESTYLE

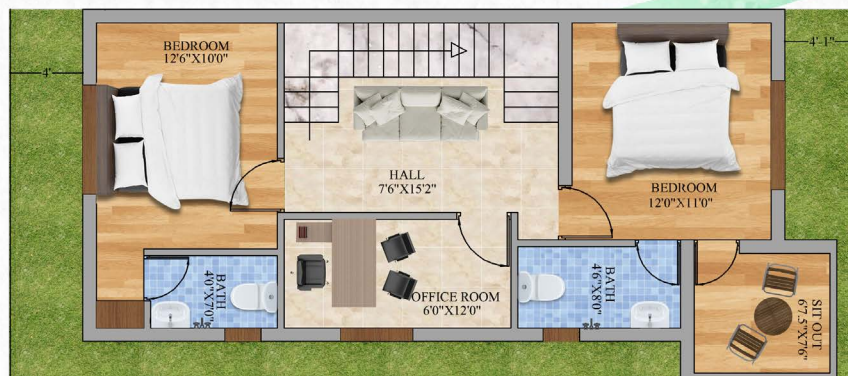
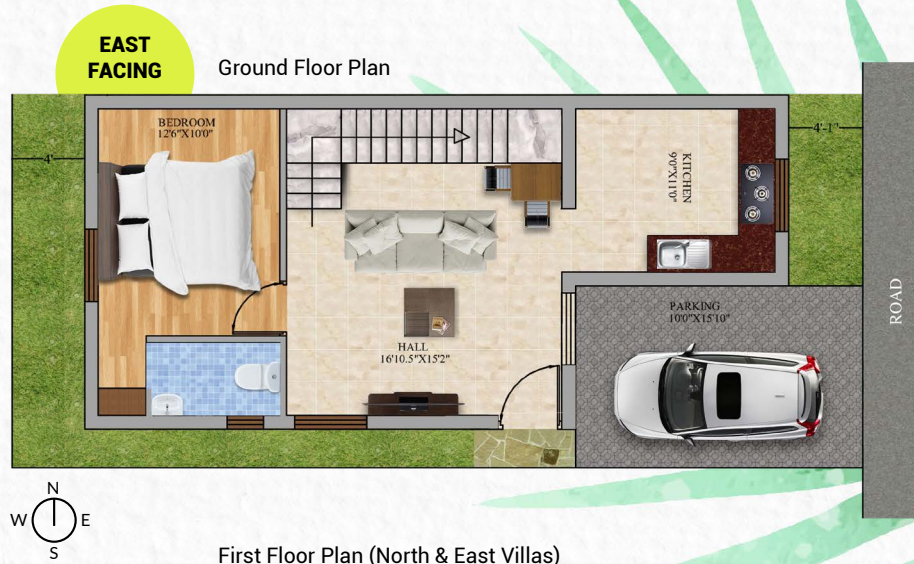
Sai Fern an exclusive villa project ranging from 1712 sqft - 1850 sqft with North and East facing, captures the spirit of independent space with a blend of community living. Crafted with uniqueness in its presence, provides a wonderful living experience.



### AMAZING GAZING GREENERY

Sai fern captures the panoramic view of greener environment escalating the surroundings and copious ground water gives a better quality of life. Each day of your life at Sai Fern blooms with freshness and happiness limitlessly.





### AMAZING ROOMS FOR CELEBRATIONS OF TOGETHERNESS

An opulent ambience with maximise space offers you the comfort and sense of pride. More space brings in more celebration, more joy and more fun of togetherness. The interiors has their own trendy style and adding a little extra by your creativity excels the look and feel of each room.

### AMAZING WORKSPACE TO IMPACT EFFICIENCY

Heading with current outbreak, we take this privilege of offering work from home space for the first time in the history of reality. The idea is conceived keeping in mind the present and future scenario of work from home concept.



- SCHOOLS**
- Zigma Matriculation School
  - Kidzee
  - Ravindra Bharathi Global School
  - Gayathri Vidhyalaya

- HOSPITALS**
- Freedom care rehab centre
  - Arogya Children's Hospital
  - Dr.Uma Women's Clinic
  - Rithika Nethralaya Eye Clinic

- COMPANIES**
- Kaleesuwari Private Limited
  - Padma Mines And Minerals Corporation
  - Madras Cements Limited

- ENTERTAINMENT HUBS**
- Macaw Kids Party
  - Nanmangalam Reserve Forest
  - Kumaran Theatre
  - Rakesh Theatre

## SPECIFICATION



### STRUCTURE

- Framed RCC Structure with A1 Chamer Brick



### FLOORING

- Superior Quality Vitrified Tile Flooring in Living, Dining, Kitchen & Bed Rooms
- Superior Quality Anti-skid Ceramic Tile Flooring in Balcony & Toilets



### DOORS & WINDOWS

- Superior Quality Door Frames With Flush Door & Hardware For Main Door, Bed Room Door & Toilet Doors
- Windows UPVC Sliding Door/ Window with Provision for Mosquito Mesh Shutter



### PAINTING

- All Interior Walls - Asian Paints Premium Emulsion
- Exterior Walls - Asian Paints Premium Emulsion
- All Railing - Asian Paints Premium Synthetic Emulsion



### KITCHEN

- Granite Kitchen Platform
- Stainless Steel Sink
- Kitchen Dado Wall Tiles up to 2' Height above Counter Top
- Provision for Water Purifier
- Provision for Washing Machine



### TOILET

- Superior Quality Sanitary Wares
- Superior Quality Chrome-Plated Fitting
- Superior Quality Ceramic tile Dadoing in Toilet
- Provision for Geyser in toilet
- Powder Coated Aluminum Framed with Glass Ventilators



### ELECTRICAL FITTING

- Superior Quality concealed Electrical Copper wiring with circuit breakers
- Superior Quality Modular Switches in all Rooms
- TV & Telephone points in Living Room
- Power Back-up for Common Areas



**RO Water Supply**



**UPS Powerbackup**



**CCTV Camera**



**Free WI-FI**



#### SITE OFFICE ADDRESS:

Plot No. E1 & E2, Chelladurai Avenue, Anjaneyar Koil Street, Vengalvasal, Chennai, Tamil Nadu 600 032.

Ph: 099622 22336 | [www.landsterprojects.com](http://www.landsterprojects.com)



#### REGISTERED OFFICE ADDRESS:

53, 2<sup>nd</sup> Main Rd, Defence Colony, Ekkatuthangal, Chennai, Tamil Nadu 600 032.

Ph: 099622 22336 | [www.landsterprojects.com](http://www.landsterprojects.com)

Disclaimer: All the information presented within this Brochure are purely to convey the project concept and not meant to be considered final and binding. The Promoter reserves the right to change, alter, add or delete any of the specifications mentioned herein based on the site conditions and construction exigencies without prior permission or notice. Project specifications, as in the final agreement, shall be considered binding for the buyer as well as the Promoter. External colour schemes and landscape detailing may vary from the illustrations considering site conditions. Interior images and views of the surrounding neighborhood may not represent the actuals as these could be digitally enhanced/ altered. Furniture shown in the plans is only for the purpose of illustrating a possible layout and does not form a part of the pricing or specifications. All interior views do not depict the standard wall and ceiling colours, finishes and also are not part of the pricing. Dimensions mentioned in the brochure do not consider plastering thickness and there could be a marginal variation in the carpet areas. \*T & C apply.